



EMAIL : Ashraf.Noshy@atmam-eg.com
asnoma59@outlook.com
ashrafnoshy@outlook.com
mobile : 00201223988823

**Owner and general
manager of the company
Eng. Ashraf Noshy**

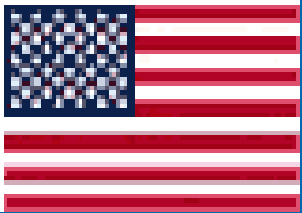
Distributor of Heavy Machinery NEW & USED Equipments

- Heavy EQUIPMENT (Loader – motor grader – dozer – excavator – backhoe loader – Skid steer)
origin USA & European AND JAPAN.
- Telescoping Mobile Crane Kato Japan.
- Mini Excavators Kato Japan .
- Boom Lift (Nifty Lift) UK
- Terex Tower Crane Italy and USA
- Kobelco Crawler Crane Japan
- Nexen and Puma and Yale forklifts UK
- McCloskey International Limited Mobile
Crusher UK
- GOLF Maintenance Equipment and Spare Parts (John Deere & Toro and Jacobson) USA

Heavy Machinery Department NEW & USED Equipment

we can supply all brands of **USED** Heavy Equipment.

we can supply all brands of **NEW** Heavy Equipment Which has no agent in Egypt



WHEEL LOADER CAPACITY 2-6 M³



Crawler Excavators 12-80 TONS



BACKHOE LOADERS DIGGING DEPTH FROM 4385 TO 5965 MM.



CRAWLER DOZERS Bilad Capacity 2.9-5.6m³



- COMPACTORS DOUBLE DRUM ROLLERS
WEIGHT FROM 3200 TO 8900 KG



- COMPACTORS SINGLE DRUM ROLLERS
WEIGHT FROM 11030 TO 12390 KG



- GRADERS operating weight is 15-18



- SERIES SKID STEER LOADERS



nifty lift



nifty lift





TEREX®

CRANES

TOWER CRANES



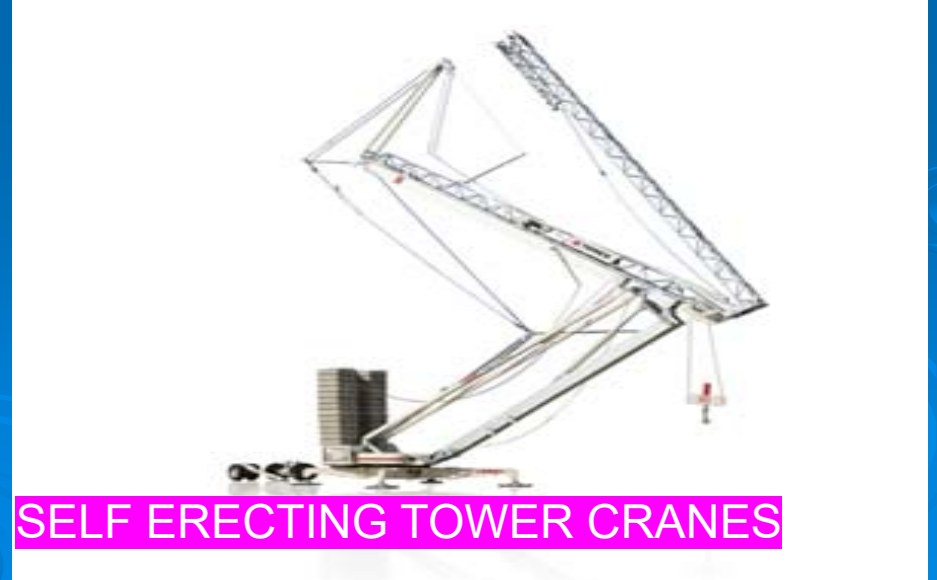
FLAT TOP TOWER CRANE



LUFFING JIB TOWER CRANES



HAMMERHEAD TOWER CRANES



SELF ERECTING TOWER CRANES

KOBELCO

KOBELCO CONSTRUCTION MACHINERY CO., LTD.

Hydraulic Crawler Cranes Capacity from 35-800 tons



KATO KATO WORKS CO.,LTD.















Nexen & puma forklift

Counterbalanced Forklifts

- Internal Combustion Forklifts
- Compact Internal Combustion Forklifts
- 3 Wheel Electric Forklifts
- 4 Wheel Electric Forklifts



Nexen

Warehouse Equipment

- Pallet Trucks
- Stackers
- Reach Trucks
- Order Pickers
- Tow Trucks





McCloskey

INTERNATIONAL

McCloskey International Limited leads the screening and crushing industry



Crushers



Cone Crushers



Impact Crushers



Jaw Crushers



Screeners



Series Screeners



S Series Screeners



Stackers

PETTIBONE

Telehandler



PILOT CAR Electric Vehicles





PC-2+2



PC-4 LIFTE



PC-6



PC-6



Generating Sets & Diesel Engines Department



Energy Production Systems

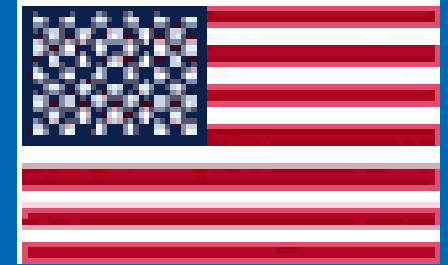
Our Product Range

Combining engineering excellence and years of experience, AJ Power produces a superb range of quality, reliable diesel generating sets from 10kVA to 4376kVA.

All of our generating sets are manufactured in the United Kingdom. .



KOHLER[®]
POWER
SYSTEMS



It Covers
the Range
from
5 KVA
up to
3000 KVA





DEERE
DIESEL

It covers the range from
20 up to 600 HP

OEM LIBRARY

Deere Power Systems Group - Saran



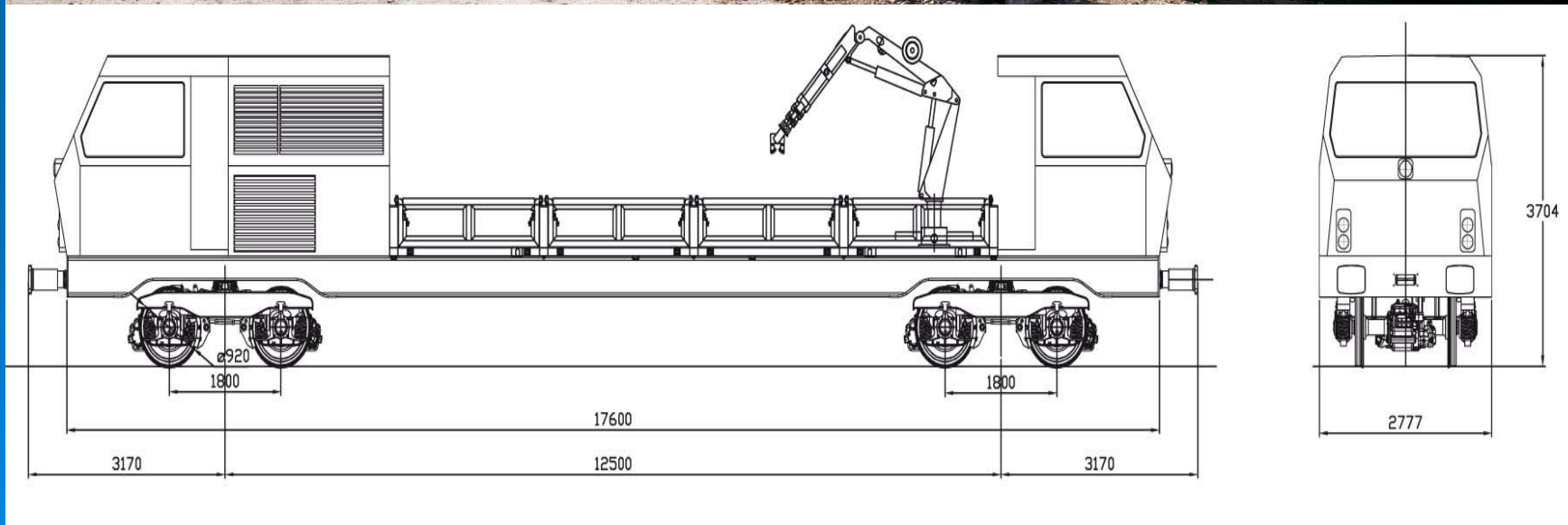
Railway equipment Department.



ATLAS
SINCE 1919

RAIL-ROAD EXCAVATORS

FROM 17 TO 23 TONS



VAIA CAR

Tecnologie ferroviarie



Equipped transport vehicles - firefighters - water tanks - bitumen tanks - sewage suction - buses transporting people – ambulances - street sweepers- rubbish dump- tipper trucks









GOLF MAINTENANCE EQUIPMENT AND SPARE PARTS



**Spare Parts for All
Brands of Heavy
Equipment & Mobile
Cranes and Golf
Equipment and all
brands of Tires**



Spare parts for Earthmoving Machines

- Ahlmann (see MECALAC)
- Atlas GmbH
- ATLAS Weyhausen (weycor)
- Bobcat / DOOSAN
- CNH – CASE, NEW HOLLAND
- DOOSAN / DAEWOO
- EUCLID (now HITACHI)
- Fiat-Hitachi (CNH)
- Fermecc
- Faun Frisch (O&K, CNH, now owned by Terex)
- FUCHS (now TEREX)
- HITACHI
- HYUNDAI
- JCB
- KOBELCO
- KOMATSU
- LIEBHERR
- MECALAC
- NOBAS (HBM-NOBAS)
- O&K (CNH)
- TEREX (VOLVO CE)
- VOLVO Construction Equipment
- Zettelmeyer

ATLAS
CRANES & EXCAVATORS



Bobcat

CASE
CONSTRUCTION

DOOSAN

HITACHI
Reliable solutions

JCB

KOMATSU

NEW HOLLAND
CONSTRUCTION

VOLVO
Construction Equipment

weycor



Spare Parts for Road Building Machines

- *Ammann Group*
- *Atlas Copco GmbH*
- *DYNAPAC– FAYAT Group*
- *ATLAS Weyhausen (weycor)*
- *BOMAG / MARINI – FAYAT Group*
- *Demag Construction Machines*
- *DYNAPAC – FAYAT GROUP*
- *HOFMANN Road Marking and Line Marking Machines*
- *VOLVO Construction Machines*
- *VOLVO-ABG*
- *WIRTGEN GROUP (WIRTGEN, VÖGELE, HAMM, KLEEMANN, BENNINGHOVEN)*

AMMANN

Atlas Copco

BOMAG
FAYAT GROUP

DYNAPAC
FAYAT GROUP

JCB

VOLVO
Construction Equipment



Spare Parts for Cranes, Lifting-, Drilling and Piling Equipment

- *BAUER Maschinen GmbH*
- *Casagrande Group*
- *EPIROC (formerly Atlas Copco)*
- *Hütte(Casagrande Group)*
- *Liebherr*
- *MANITOU*
- *Manitowoc Crane Group*
- *PPM*
- *SENNEBOGEN Maschinenfabrik GmbH*
- *Soilmec*
- *Tadano Faun*
- *WOLFFKRAN*
- *Zollern*





Demolition Tools

- *Atlas Copco Power Technique*
- *CASE Construction*
- *EPIROC (formerly Atlas Copco)*
- *Erkat – Atlas Copco*
- *Furukawa Rock Drill*
- *Indeco*
- *JCB*
- *NPK*
- *Solida*
- *Terex*





Construction Tools

- *Husqvarna*



Vehicle Parts and Motor Components

- *AVENTICS (formerly Bosch Rexroth Pneumatic)*
- *Bosch Rexroth*
- *BPW*
- *Carraro*
- *Cummins-Engines*
- *Dana Spicer*
- *Deutz Engines*
- *Farymann-Diesel*
- *HATZ-Diesel (Supra)*
- *HS Penta*
- *Iveco Parts*
- *Kessler*
- *KROMA*
- *Liebherr*
- *Linde Hydraulics*
- *MAN*
- *Mercedes-Benz, Daimler AG*
- *Voith Turbo*
- *ZF Antriebstechnik*





Undercarriages, Wear Material

- *Berco*
- *Bridgestone*
- *CASE Construction*
- *Intramex*
- *JCB*
- *Kinshofer*
- *Komatsu*
- *Lehnhoff*
- *Liebherr*
- *Rippers by:*
 - *Falkenroth*
 - *Liebherr*
 - *ESCO*
 - *Lehnhoff*
 - *Uni Z.*



Compressors, Generators

- *Atlas Copco Power Technique*
- *CompAir by Gardener Denver Deutschland GmbH*
- *IrmAir (Irmair + Elze – now Atlas Copco)*
- *Mannesmann-Demag*
- *Sullair*





Spare Parts for Concrete Mixing Equipment and Accessories

- *Cifa*
- *Elba (Amman-Group)*
- *Liebherr*
- *Putzmeister*
- *Schwing-Group (SCHWING-Stetter)*





Spare Parts for Airport Equipment

- *COBUS Industries*
- *Goldhofer*
- *Hitzinger*
- *MULAG*
- *Schopf (see Goldhofer)*
- *Trepel*

Goldhofer



Spare Parts for Cargo Handling Solutions

- *Goldhofer*
- *Kalmar*
- *MAFI*
- *TERBERG*



Spare Parts for Railway Vehicles and Locomotives

- *MAN horizontal and vertical engines types D2876 and D2840*
- *MTU engines*
- *MB engines type 444 HLA*
- *Cummins engines type QSK 19*
- *Engins of Perkins Rail*
- *Voith Turbo transmissions type T221*
- *Raft for Bombardier – Siemens – Alstom*
- *Voith Küsel high speed couplings*
- *Centaflex couplings*
- *Kroma liquid level indicators*



Spare Parts for Agricultural Machines

- *Agrotech*
- *CASE Agriculture*
- *Claas*
- *Grimme*
- *Fortschritt*
- *John Deere*
- *Krone*
- *MANITOU*
- *New Holland*
- *Renault*
- *Steyr*



CATERPILLAR

KOMATSU



Cummins



NAVISTAR



Bobcat



VOLVO



John Deere



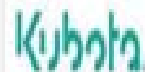
bühler



Allison
Transmission



Ditch Witch



TAKEUCHI



MUSTANG



GRI tires construction & agricultural Brand Origin Sri Lankan

GRI

[AGRICULTURE](#)

[CONSTRUCTION](#)

[MATERIAL HANDLING](#)

[COMPANY](#)

[NEWS](#)

[CAREERS](#)

[SUSTAINABILITY](#)

[FIND TIRE](#)

[CONTACT](#)

[NEW TIRE](#) ▾

EN ▾



CONSTRUCTION TIRES

GRI Construction tires provide outstanding machine stability in demanding operations. These technologically advanced tires provide longer running hours, extensive tire life and superior performance. The tires are characterized by its unique tread designs, together with its formula of special natural rubber compounds with heat, cut and abrasion resistance attributes. Our range of tires offer remarkable quality and great value.

Uniquely designed and developed for construction workers who build for the next generation, our tires are exceptionally stable in challenging operations.



OZKA Turkey Tires



CORPORATE ▾ PRODUCTS ▾ CATALOGUE HUMAN RESOURCES CONTACT ▾

Advanced Search



HOMEPAGE ▸ INDUSTRIAL TYRES

CATEGORIES

- EM - INDUSTRIAL TYRES
- RADIAL EM TYRES
- FORKLIFT TYRES
- COMPACTOR TYRES

TIRE SELECTION

- CONVENTIONAL TIRE
- Lastik TipiSeçiniz

PATTERN

PATTERN SEARCH

- KNK - 44
- KNK - 65
- KNK - 66
- KNK - 70

9 tyres are listed

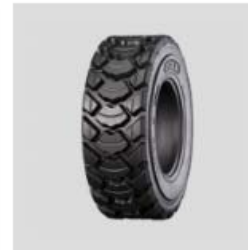
Em - Industrial Tyres x



KNK - 44 Em - Industrial Tyre



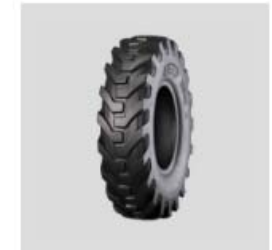
KNK - 65 Em - Industrial Tyre



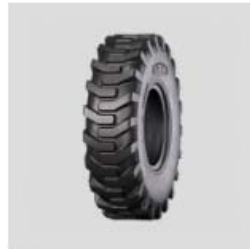
KNK - 66 Em - Industrial Tyre



KNK - 70 Em - Industrial Tyre



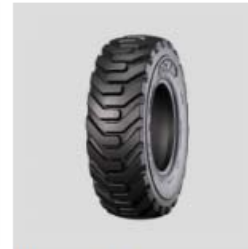
KNK - 72 Em - Industrial Tyre



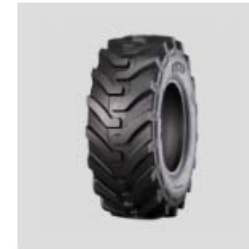
KNK - 74 Em - Industrial Tyre



IND - 80 Em - Industrial Tyre



IND - 85 Em - Industrial Tyre



IND - 88 Em - Industrial Tyre

CONTACT

SEHA Turkey Tires



SEHA® 

[Home](#)

[About Us](#)

[Products](#) ▾

[SEHA](#) ▾

[Contact Us](#)

 [English](#) ▾



KNK 50 / SH 39



KNK 52



KNK 54



KNK 140



KNK 48



Industrial Tyres



OR 71



KNK 44



KNK 65



KNK 66



IND 80/SH R4 IND



IND 88



KNK 70



KNK 72



KNK 74

Moving Forward



PATTERN DIGEST

KOREA - INDONESIA FACTORY



LIGHT TRUCK BUS TIRES / TRUCK & BUS BUS TIRES / OFF THE ROAD BUS TIRES
INDUSTRIAL BUS TIRES / TUBE / FLAP

*we can supply all brands of USED Heavy
Equipment.*

*we can supply all brands of NEW Heavy
Equipment Which has no agent In Egypt•*

Thanks for listening
Q & A

